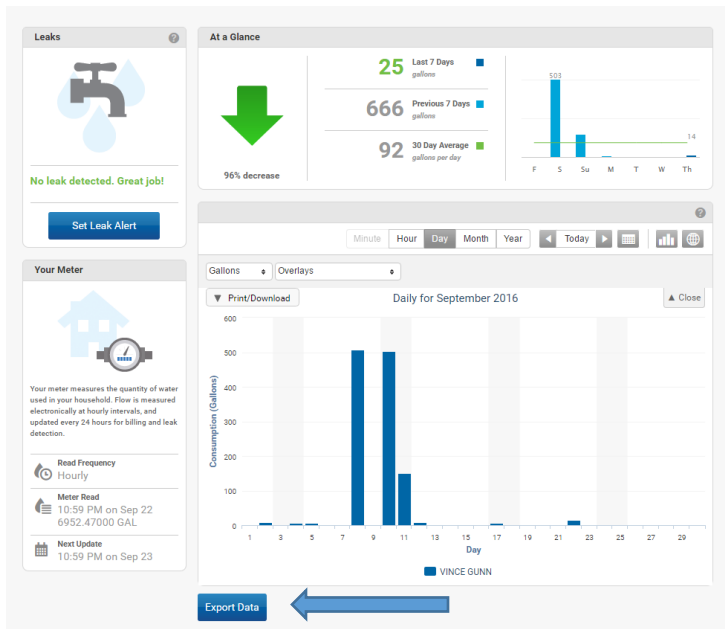


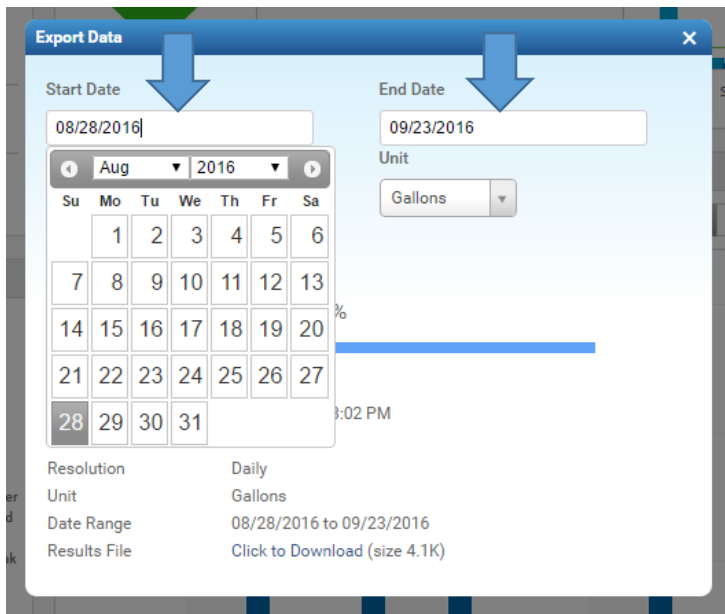
To switch between accounts, click on the drop down around by your address. A descriptive name can be added to your bill and EyeOnWater to help make finding the location as easy as possible. Contact our office to name your locations.

location as easy as possible. Contact our office to name your locations.



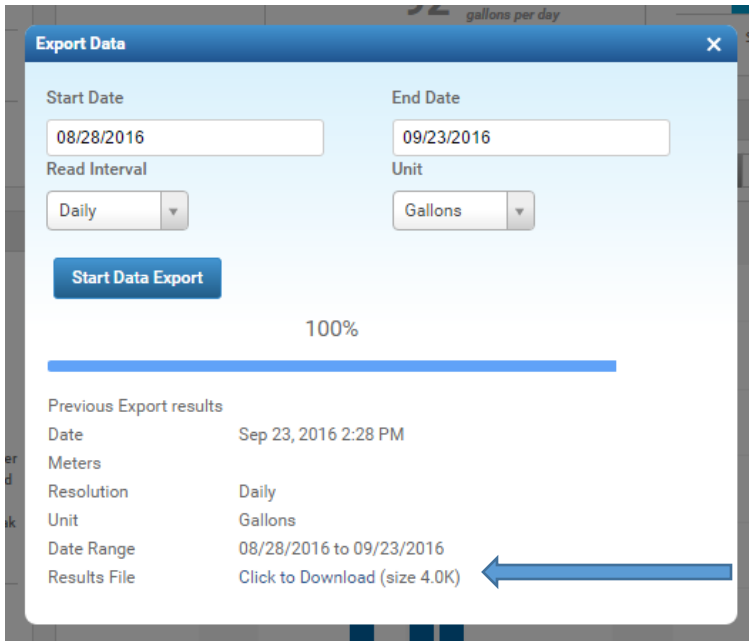
If you wish to download the meter readings a flows, please follow these steps.

1. Locate the account using the drop down arrow.
2. Select the “Export Data” button under the graph.



3. Select your “Start Date” and “End Date”. Click in the box and select the date using the dropdown arrows for month and year and the calendar for the day.

4. Select “Start Data Export”
5. Your screen will then show a blue line that will go to “100% when finished.



6. Click the “Click to Download” link to export your data to Excel.



7. You may have a pop up on the bottom of your screen that looks like this or you may need to find you “Downloads” folder in your documents.
8. Once the file has been downloaded and opened it will look something like this.

Location	Register	Endpoint	Meter_ID	Meter_SN	Read_Time	Service_P	Read	Read_Unit	Read_Met	Encoder_F	Flow_Time	Flow_Unit	Flow
1E+08	L10		48517480	8/28/2016 0:00	US/Mount	5053.62	GAL	Network	505362	8/28/2016	Gallons	792.3	
1E+08	L10		48517480	8/29/2016 0:00	US/Mount	5498.37	GAL	Network	549837	8/29/2016	Gallons	444.8	
1E+08	L10		48517480	8/30/2016 0:00	US/Mount	5702.71	GAL	Network	570271	8/30/2016	Gallons	204.3	
1E+08	L10		48517480	8/31/2016 0:00	US/Mount	5725.61	GAL	Network	572561	8/31/2016	Gallons	22.9	
1E+08	L10		48517480	9/1/2016 0:00	US/Mount	5728.08	GAL	Network	572808	9/1/2016	Gallons	2.5	
1E+08	L10		48517480	9/2/2016 0:00	US/Mount	5737.73	GAL	Network	573773	9/2/2016	Gallons	9.6	
1E+08	L10		48517480	9/3/2016 0:00	US/Mount	5738.74	GAL	Network	573874	9/3/2016	Gallons	1	
1E+08	L10		48517480	9/4/2016 0:00	US/Mount	5744.22	GAL	Network	574422	9/4/2016	Gallons	5.5	
1E+08	L10		48517480	9/5/2016 0:00	US/Mount	5751.41	GAL	Network	575141	9/5/2016	Gallons	7.2	
1E+08	L10		48517480	9/6/2016 0:00	US/Mount	5752.87	GAL	Network	575287	9/6/2016	Gallons	1.5	
1E+08	L10		48517480	9/7/2016 0:00	US/Mount	5754.87	GAL	Network	575487	9/7/2016	Gallons	2	
1E+08	L10		48517480	9/8/2016 0:00	US/Mount	6261.36	GAL	Network	626136	9/8/2016	Gallons	506.5	
1E+08	L10		48517480	9/9/2016 0:00	US/Mount	6262.71	GAL	Network	626271	9/9/2016	Gallons	1.4	
1E+08	L10		48517480	9/10/2016 0:00	US/Mount	6765.21	GAL	Network	676521	9/10/2016	Gallons	502.5	
1E+08	L10		48517480	9/11/2016 0:00	US/Mount	6915.5	GAL	Network	691550	9/11/2016	Gallons	150.3	
1E+08	L10		48517480	9/12/2016 0:00	US/Mount	6923.4	GAL	Network	692340	9/12/2016	Gallons	7.9	
1E+08	L10		48517480	9/13/2016 0:00	US/Mount	6924.01	GAL	Network	692401	9/13/2016	Gallons	0.6	
1E+08	L10		48517480	9/14/2016 0:00	US/Mount	6925.32	GAL	Network	692532	9/14/2016	Gallons	1.3	
1E+08	L10		48517480	9/15/2016 0:00	US/Mount	6927.31	GAL	Network	692731	9/15/2016	Gallons	2	
1E+08	L10		48517480	9/16/2016 0:00	US/Mount	6928.69	GAL	Network	692869	9/16/2016	Gallons	1.4	
1E+08	L10		48517480	9/17/2016 0:00	US/Mount	6934.3	GAL	Network	693430	9/17/2016	Gallons	5.6	
1E+08	L10		48517480	9/18/2016 0:00	US/Mount	6935.48	GAL	Network	693548	9/18/2016	Gallons	1.2	
1E+08	L10		48517480	9/19/2016 0:00	US/Mount	6936.3	GAL	Network	693630	9/19/2016	Gallons	0.8	
1E+08	L10		48517480	9/20/2016 0:00	US/Mount	6936.87	GAL	Network	693687	9/20/2016	Gallons	0.6	
1E+08	L10		48517480	9/21/2016 0:00	US/Mount	6938.34	GAL	Network	693834	9/21/2016	Gallons	1.5	
1E+08	L10		48517480	9/22/2016 0:00	US/Mount	6952.47	GAL	Network	695247	9/22/2016	Gallons	14.1	

The columns that may have more importance are:

- Location_Name**
- Account Name**
- Meter_ID**
- Location #**
- Read_Time**
- When reading was taken**
- Read**
- Meter Reading**
- Flow**
- Gallons per day**